

# Paramount 9000

## GC-RCD



**Paramount 9000 GC-RCD (P9000R)** is a process gas chromatograph (GC) coupled with a reducing compound detector (RCD) specifically designed for analyzing trace level of H<sub>2</sub> and CO in UHP gases. Trace impurities, such as H<sub>2</sub> and CO, in a gas stream are separated by the GC and detected by the RCD via highly sensitive Hg absorption spectrometry. The integrated design of **P9000R** gas analyzer allows continuous monitoring of H<sub>2</sub> and CO in UHP process gases with unsurpassed sensitivity and stability.

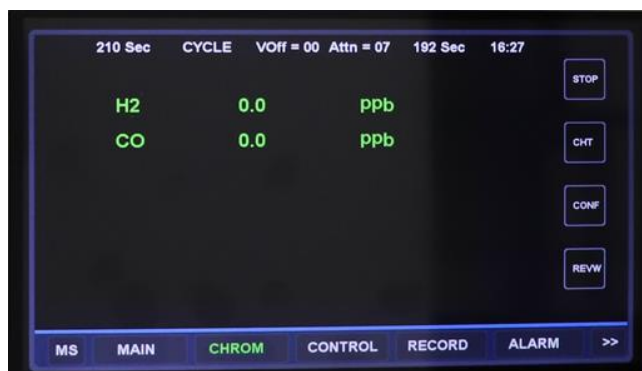
### Unique Features:

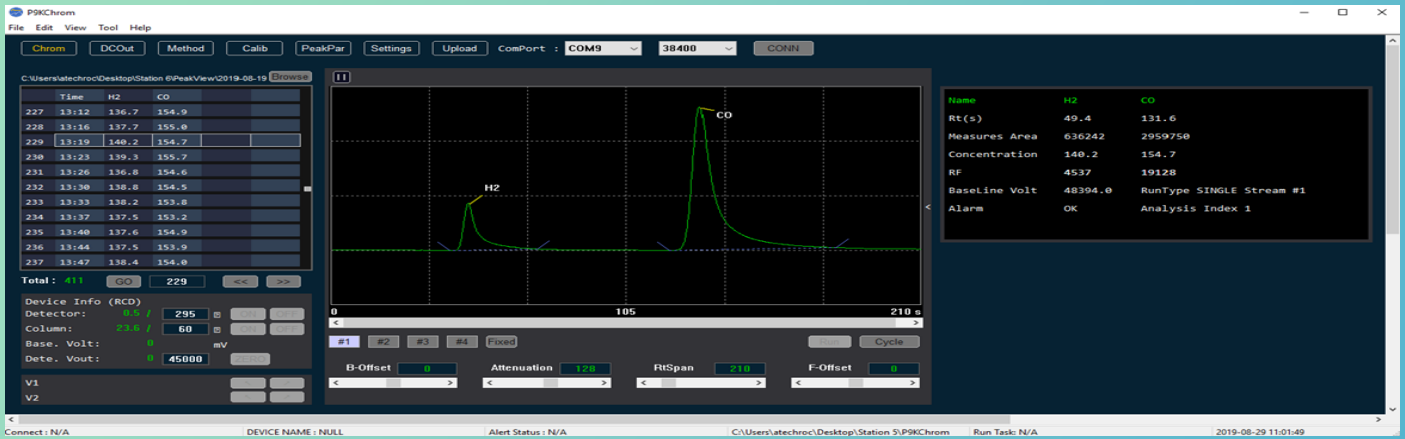
#### User Interface

- Large industrial grade 7" color display
- Intuitive touchscreen operation with virtual keyboard
- 7 days internal data storage
- Instant historical data play back on touch screen
- Powerful *P9KChrom* software for advanced control and data analysis
- RS232 serial communication
- Up to 6 analog signal outputs

#### Control Electronics and Firmware

- On board DSP with proprietary S/N improving algorithm
- S/N improvement with DC power management and noise isolation
- On demand historical data review on touch screen
- Data review does not interfere with continuous sample run
- Sample stream switching for different sample gas types





## Specifications:

LDL (ppb)

Impurity	Sample Gas			
	N <sub>2</sub> , Ar, He*	O <sub>2</sub>	H <sub>2</sub>	Air
H <sub>2</sub>	<0.4	<0.4	N/A	<0.4
CO	<0.2	<0.2	<0.2	<0.2

\*Helium carrier gas must be used for helium sample gas

**Accuracy:** ± LDL or ± 10% of reading, whichever is higher

**Range:** 0 – 1 ppm with 1 mL sample size; 0 – 10 ppm with 0.1 mL sample size

- Carrier gas: Purified 5N nitrogen or helium
- Sample gas flow rate: 25 – 60 mL/min
- Analyzer dimensions: 27" L x 17" W x 7" H
- Analyzer weight: 30 lbs

## Model Table:

Model	Sample Gas					Voltage	
	N <sub>2</sub>	O <sub>2</sub> / Air	H <sub>2</sub>	Ar	He	110Vac	220Vac
P9000R	-N	-O	-H	-A	-E	-1	-2

Order Example for N<sub>2</sub> 110 Vac: P9000R-N-1

## Options:

- Single point internal dilution system
- Internal sample stream switching system (two streams)