

# Paramount 9000

## GC-PDD



**Paramount 9000 GC-PDD (P9000P)** is a process gas chromatograph (GC) coupled with a Pulsed Discharge Detector (PDD) specifically engineered for detecting trace level of Ar and N<sub>2</sub> in UHP bulk gases. The core technology of this PDD is a stable helium plasma generated by a low power pulsed DC discharge. While operated in the helium photoionization mode, the PDD is an excellent ppb level GC detector for fixed gases. Every **P9000P** trace gas analyzer also features a helium purged GC chamber to ensure the excellent sensitivity of PDD is not compromised.

### Unique Features:

#### User Interface

- Large industrial grade 7" color display
- Intuitive touchscreen operation with virtual keyboard
- 7 days internal data storage
- Instant historical data play back on touch screen
- Powerful *P9KChrom* software for advanced control and data analysis
- RS232 serial communication
- Up to 6 analog signal outputs

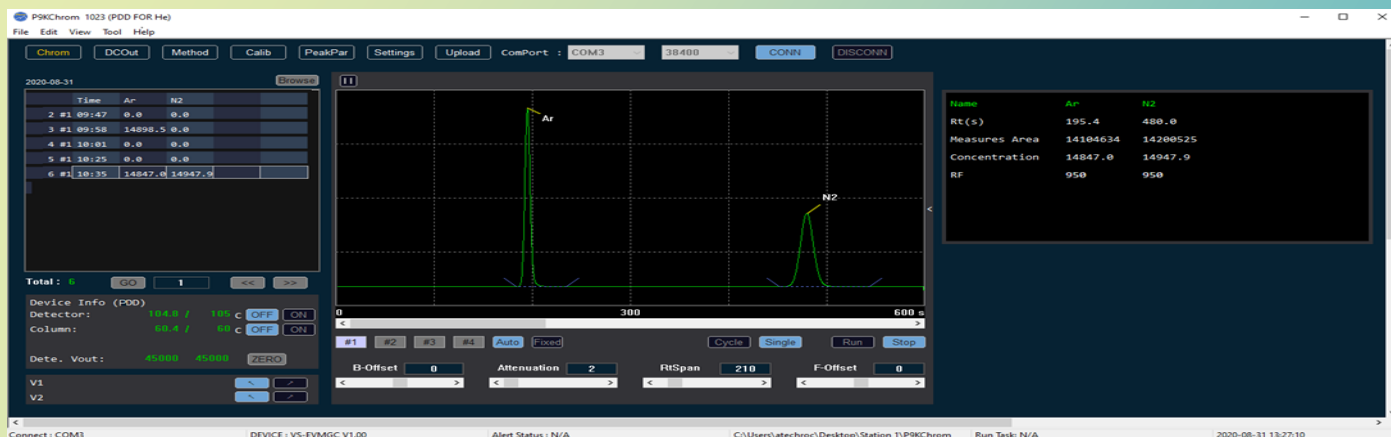


#### Control Electronics and Firmware

- On board DSP with proprietary S/N improving algorithm
- S/N improvement with DC power management and noise isolation
- On demand historical data review on touch screen
- Data review does not interfere with continuous sample run
- Sample stream switching for different sample gas types

**Performance Analyzer Business Co.**





## Specifications:

### LDL (ppb)

| Impurity       | Sample Gas     |     |     |                  |                   |
|----------------|----------------|-----|-----|------------------|-------------------|
|                | N <sub>2</sub> | Ar  | He  | O <sub>2</sub> * | H <sub>2</sub> ** |
| N <sub>2</sub> | N/A            | 0.5 | 0.5 | 0.5              | 0.5               |
| Ar             | 0.5            | N/A | 0.5 | 0.5              | 0.5               |

\* With an oxygen removal system.

\*\* With a hydrogen removal system.

**Accuracy:**  $\pm 0.5$  ppb or  $\pm 10\%$  of reading, whichever is higher

**Range:** 0 – 10 ppm

- Carrier gas: Purified 5N helium
- Sample gas flow rate: 25 – 60 mL/min
- Analyzer dimensions: 27" L x 17" W x 7" H
- Analyzer weight: 33 lbs

## Model Table:

| Model  | Sample Gas     |    |    |                |                | Voltage |        |
|--------|----------------|----|----|----------------|----------------|---------|--------|
|        | N <sub>2</sub> | Ar | He | O <sub>2</sub> | H <sub>2</sub> | 110Vac  | 220Vac |
| P9000P | -N             | -A | -E | -O             | -H             | -1      | -2     |

Order Example for N<sub>2</sub> 110 Vac: **P9000P-N-1**

## Options:

- Single point internal dilution system

CE